



08186 Llíssà d'Amunt
Barcelona
Spain

Tel.:+ 34 93 860 90 00
Fax:+ 34 93 860 90 17
e-mail: biokit@biokit.com
www.biokit.com

Date: 14/04/05

Ref: 188/MKT/Q/65

SUBJECT **BQA – New software version including different languages.**

We would like to inform you about a new change on the BQA software (User Interface and Main).

These are the current and valid software versions:

- **User Interface:**
 - 2550291104 English
 - 2550295100 Spanish
 - 2550297104 Italian
 - 2550293103 Germany
 - 2550296103 French
 - 2550298103 Portuguese
 - 2550292104 Chinese
- **Main:**
 - 2550164133
- **Download Software**
 - 2550260101
- **Upload Software**
 - 2550259101

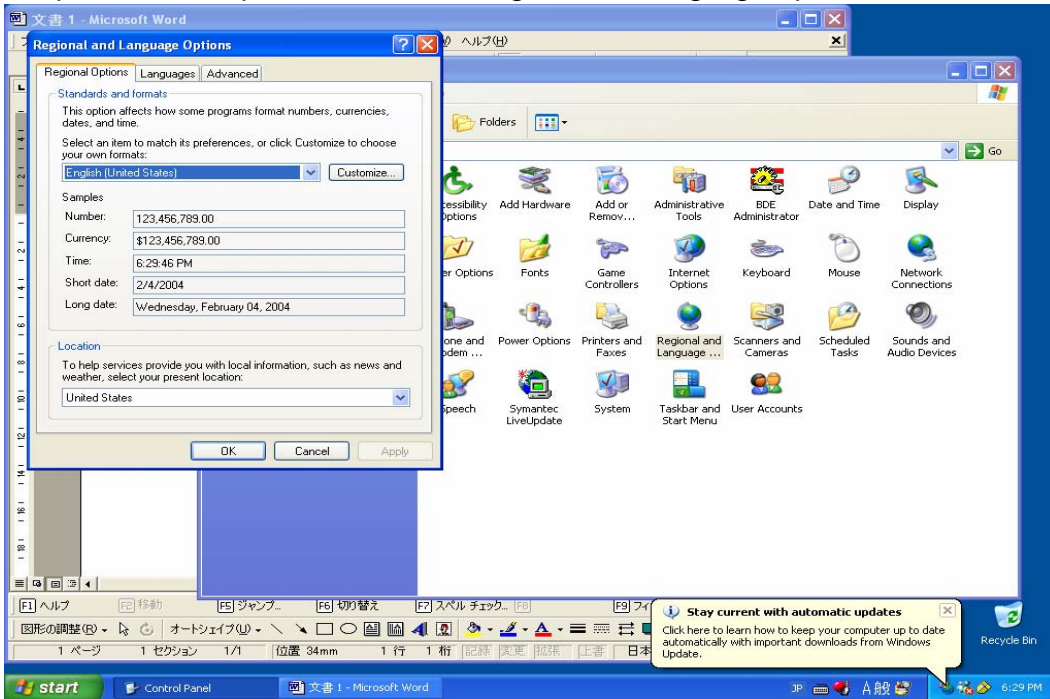
The changes and the installation procedure are listed below.

Please, do not hesitate to contact us if you need further details.



Procedure Set up Region and Language

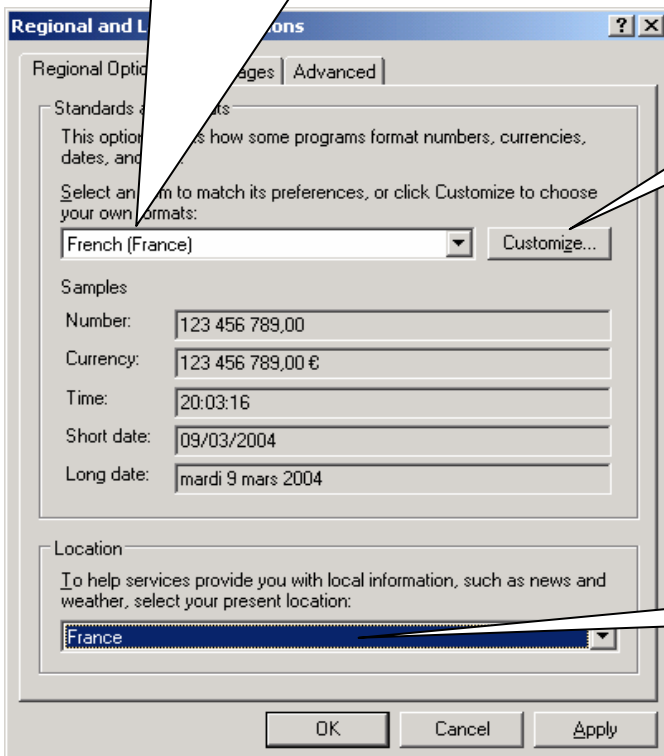
1. Open the control panel and click on "Regional and Language Options".



2. Set up as the followings on Regional and Language Options.

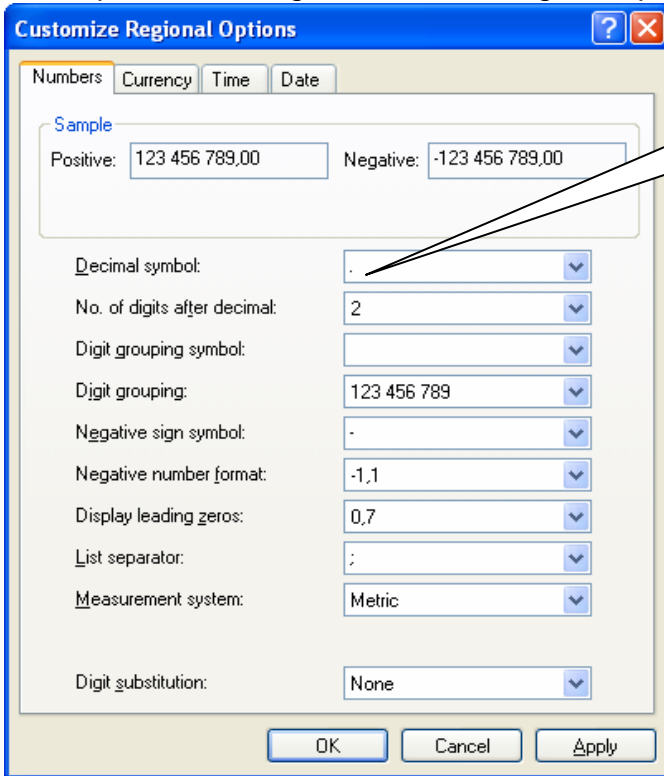
1. Select the language of the user interface software.

3. Click on the Customize.



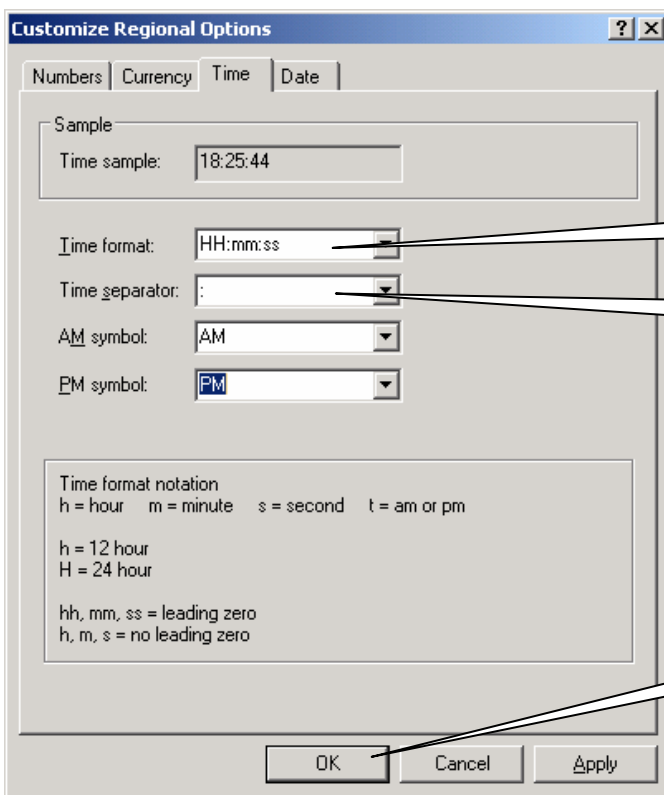
2. Select the same language as set above

3. Set up as the followings on Customize Regional Options.



4. Select “. Period ” on Decimal symbol.

4. Select “Time” tab, select Time format “HH:mm:ss” and Time Separator “:” and click “OK” button.

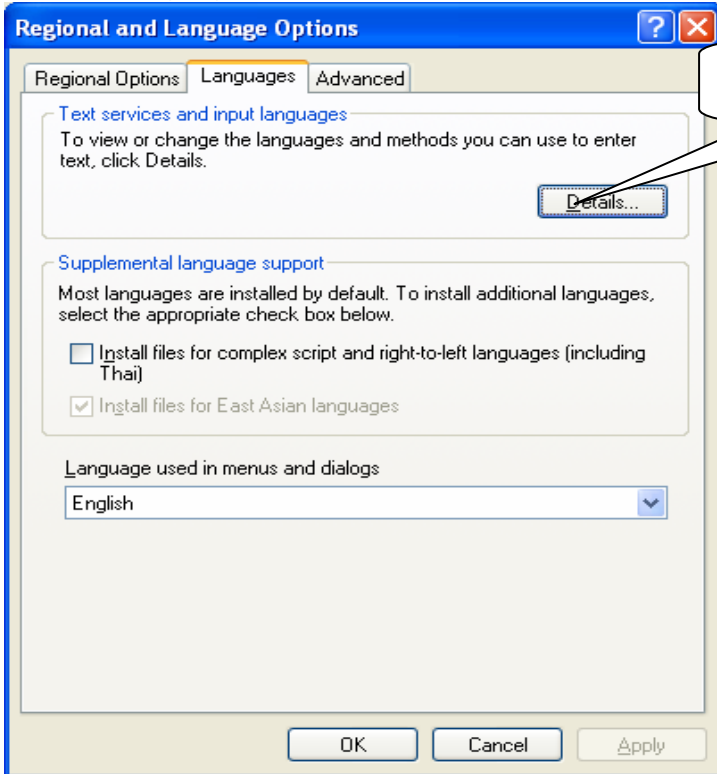


5. Select “HH:mm:ss”.

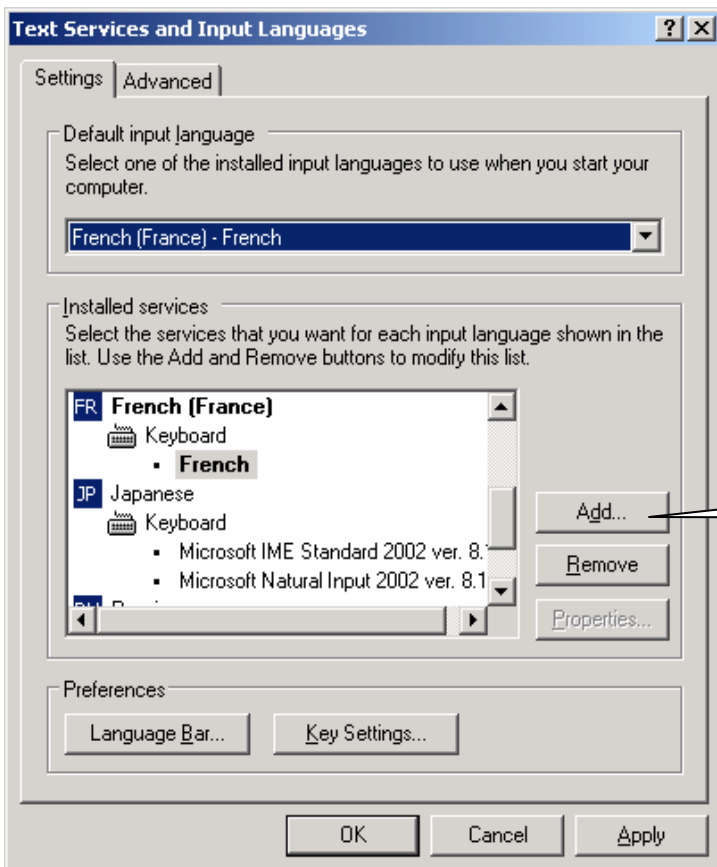
6. Select “:”

7. Click on the “OK” button.

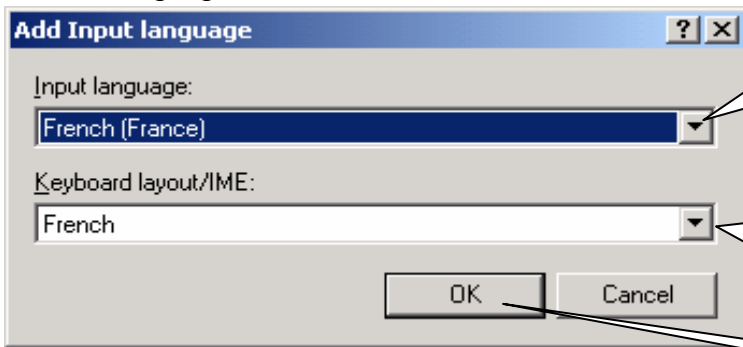
5. Select Language tab and click on the "Details" button at Text services and input languages.



6. Click on the "Add" button "Installed services."



7. Select language.

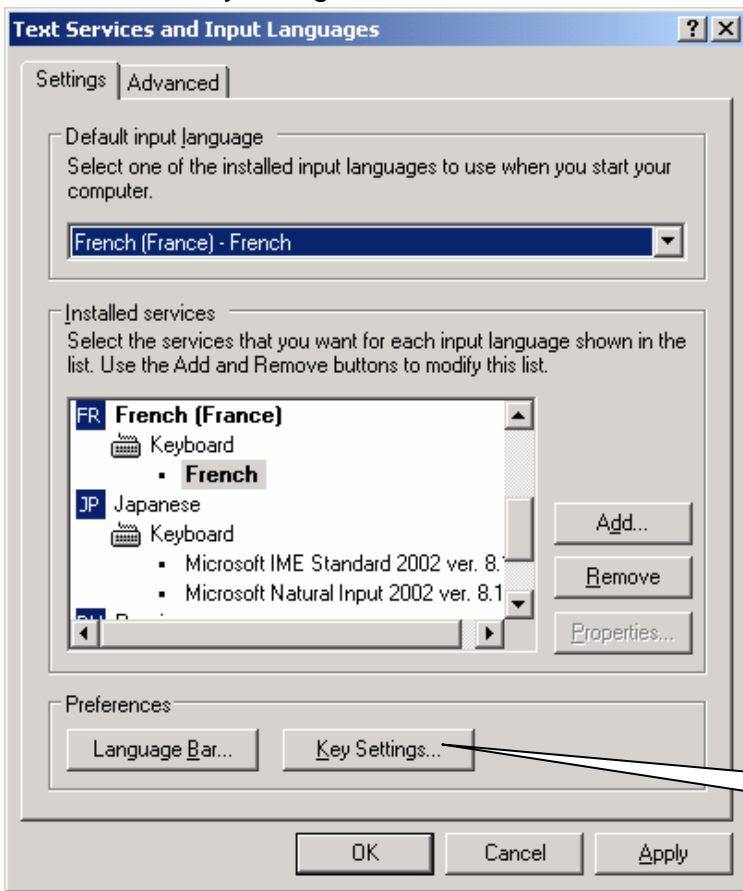


10. Select the language of the user interface software.

11. Select the language set above.

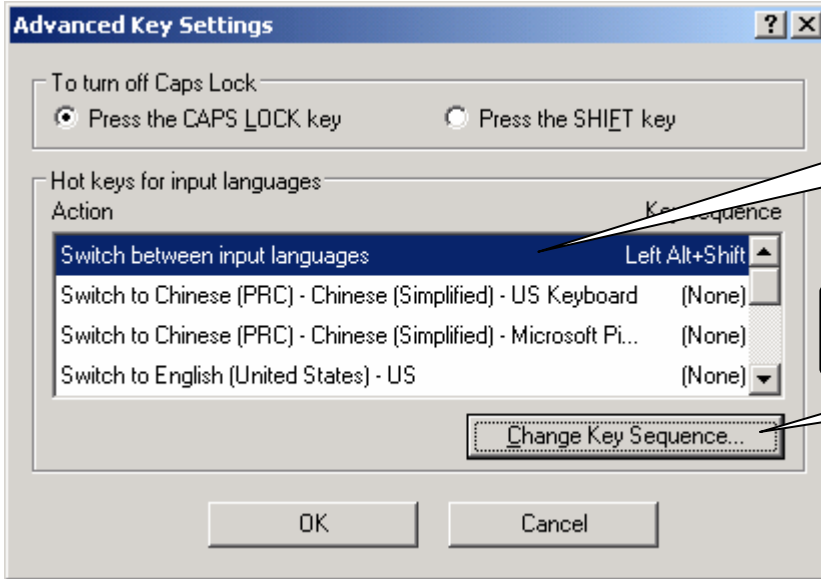
12. Click on the "OK" button.

8. Click on the "Key Setting" button.



13. Click on the "Key Setting" button.

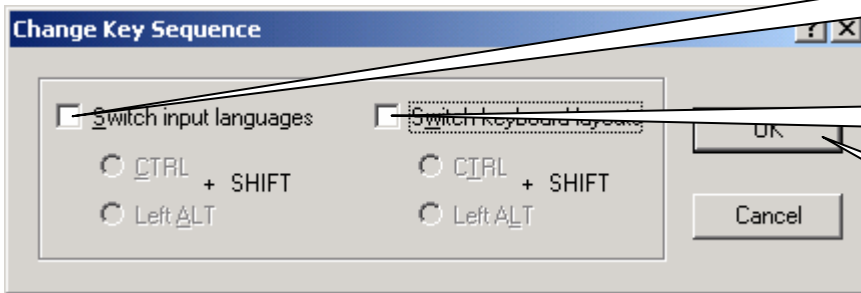
9. Select the action and click on the "Switch between input languages"



14. Select "Switch between input languages".

15. Click on the "Change Key Sequence" button.

10. Remove the check on the "Switch input languages" and "Switch keyboard layout"

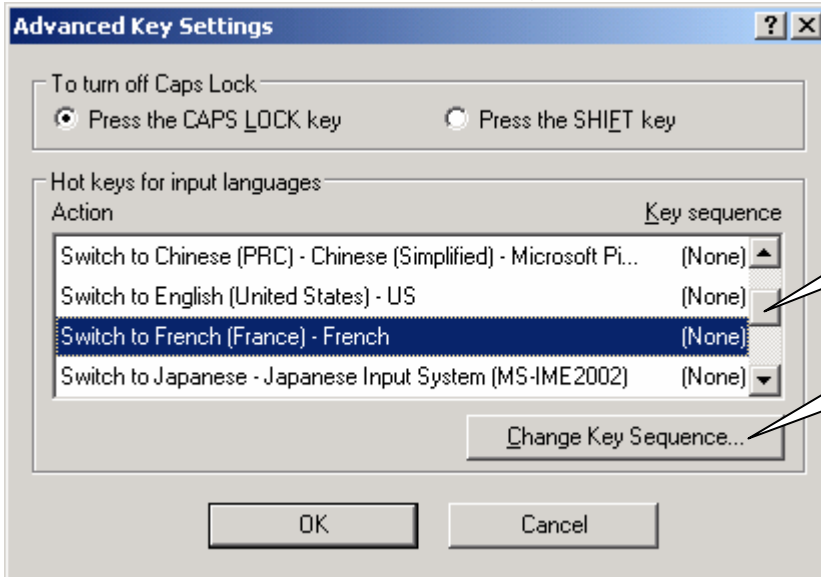


16. Remove the check on the "Switch input languages".

17. Remove the check on the "Switch keyboard layout".

18. Click on the OK button.

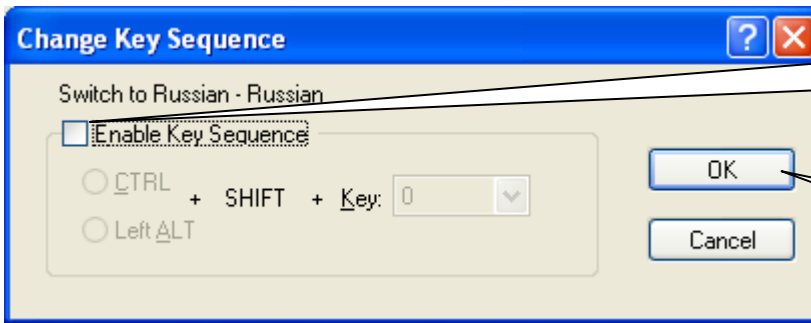
11. Select the action and click on the "Change Key Sequence" button.



19. Select the language of the user interface software.

20. Click on the "Change Key Sequence" button.

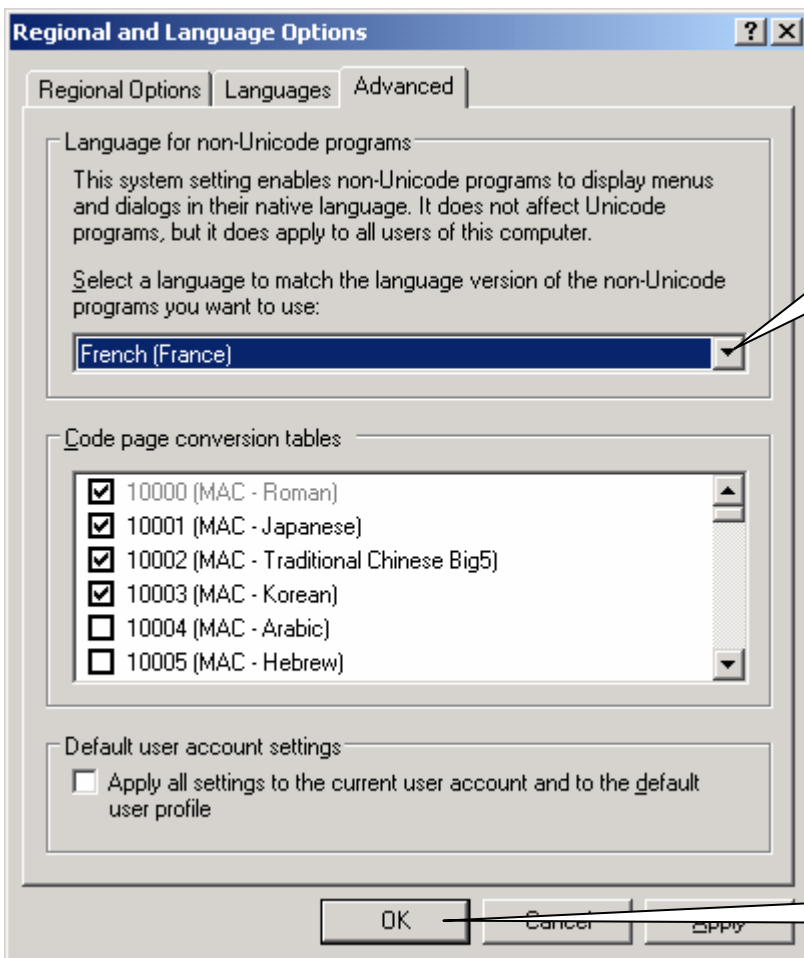
12. Remove the check on the "Enable Key Sequence".



21. Remove the check on the "Enable Key Sequence".

22. Click on the OK button.

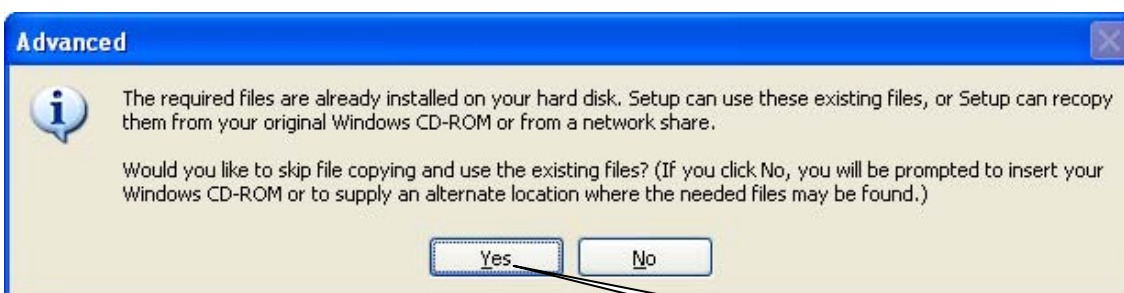
13. Select "Advanced" tab and select a language.



23. Select a language of the user interface software.

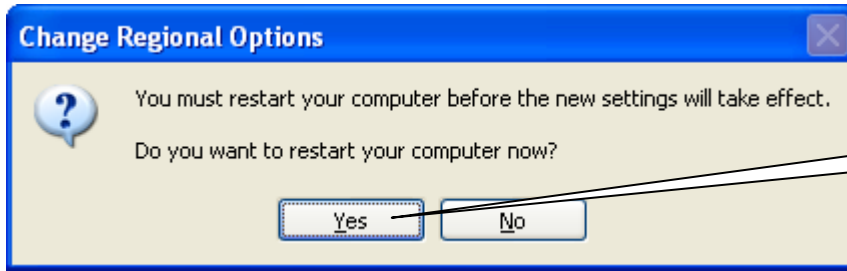
24. Click on the "OK" button.

14. Click on the "Yes" button.



25. Click on the "Yes" button.

15. Click on the “Yes” button.



26. Click on the “Yes” button.

Language	Standards and formats	Location	Input language	Keyboard layout	Detail input language	Language for non-Unicode programs	Decimal symbol
French	French (France)	France	French (France)	optional	optional	French (France)	.
German	German (Germany)	Germany	German (Germany)	optional	optional	German (Germany)	.
Spanish	Spanish (Spain)	Spain	Spanish (International Sort)	optional	optional	Spanish (Spain)	.
Portuguese	Portuguese (Portugal)	Portugal	Portuguese (Portugal)	optional	optional	Portuguese (Portugal)	.
Chinese	Chinese (China)	China	Chinese (China)	optional	optional	Chinese (China)	.
Greek	Greek	Greece	Greek	optional	optional	Greek	.

Software Update

User interface software

- 1) Multi-language.
Arranged user interface for various languages, French, German, Spanish, Italian, Greek, Portuguese and Chinese.
- 2) QC results.
Removed "H", "L", "<" and ">" flags to QC results.
- 3) Run Monitor .
Changed to display method name for all replicates on run monitor screen.
- 4) Results for Standard sample.
Corrected to indicate calibrator lot number for standard sample at Result menu.
- 5) Run Monitor.
Corrected error flag "E70" to "OVR".
- 6) Calculated tests.
Changed the output from "0" to "*****" when one of the consisting test had an error.
- 7) Auto rerun.
Corrected to perform auto rerun for normal sample having "S", "C", "M" or "R" as a first character had range over error.
- 8) Patient information.
Corrected the bug that unable to edit or to delete patient information on test select screen if patient ID is registered including space at patient information definition screen or Test Select screen.
- 9) Log-logit.
Correct the program to determine the solution by comparing S3 Calibrator concentration value with "Lower than lowest inflection point" or "Higher than highest inflection points" so that correct concentration value should be outputted.
- 10) Regent inventory.
Corrected not to include dead volume in the inventory.
- 11) Calibration curve.
Add "OVR" flag on a result if delta ABS for Log-logit, Spline or Point to Point is out of lowest and highest calibration range. Added feature to select result out side the range from 1) Limit result within top standard value and minimum standard value or 2) Hypothetically extend calibration curve and indicate expected value.
- 12) Host communication.
Corrected numbers of carets at universal test ID in order and result records to meet ASTM rules.

- 13) Reagent barcode.
Enable to read 6 digits and 13 digits reagent barcode label.
- 14) Linearity Limit Check.
Enable to change threshold value of each method for linearity limit check.
- 15) Absorbance Limit Check .
Modified not to add AB2 flag on the results if the first 4 measured value are in the absorbance limit and the others are out of the absorbance limit.
- 16) Alarm of consumable parts.
Alarm before start of round if validity of consumable part is expired.
- 17) ISE Cleaning at maintenance menu.
Changed the number of ISE cleaning from 1 to 3 to rinse the electrodes well when ISE Cleaning is performed at maintenance menu.
- 18) ISE Cleaning before sleep.
Enable to perform ISE cleaning before sleep. Added "Setup menu for maintenance at sleep" at procedure of sleep.
- 19) ISE calibration.
ISE prime is performed once when ISE calibration is failed.
- 20) Calibration curve and reagent lot number.
Modified to check calibration curve and reagent lot number to be used for calibration curve are available before start of round. Alarms if calibration curve and its reagent lot number are not available. Add error flag "CLT" on the results if operator disregard the alarm and start run.
- 21) Reagent Inventory.
Corrected not to change remaining volume for the closed reagent at Reagent Inventory page 2/2.
- 22) Calibration curve.
Changed from "Extend from min. & max. calibration" to "Disable extrapolated results" on the optional setting of "Details" =>System (F9) => System Parameters screen.
- 23) Calibration curve and reagent lot number.
Modified to compare reagent lot number used to obtain calibration curve and the ones on RCU tray before starting round. Generate alarms when they do not match. Add error flag "CLT" on the results when operator disregard the alarm and started the run.
- 24) Calibration curve.
Changed texts from "Extend from min. & max. calibration" to "Disable extrapolated results" for better understanding on the optional setting of "Details" =>System (F9) => System Parameters screen.
- 25) Appearance of reagent inventory.
Correct to appear red when remaining numbers of test for a reagent becomes zero.

- 26) Control Name.
Changed to show control name on ordinary QC results.
- 27) Alarm Message.
Corrected alarm messages 205, 506 and 553 where sensor on/off expressions were reversed.
- 28) Inventory 1/2 page.
Corrected the erroneously displayed "0", as remaining number of test.
- 29) The value of Cal A.
Corrected the initial volume of Cal A I for its fully amount. (ITA version 2550312103 only).
- 30) Corrected the popup window that showed emergence stop when restart from first emergence stop.
- 31) Corrected "0" divide in calculation of concentration.
- 32) Corrected the calculation of Spline calibration when the calibration curve happens to be linear. The calculation was incorrect when the all segments of calibration points have the same slope.
- 33) Enabled to print ">" mark on the report printout when the result is over the technical range.

Mechanical control software

- 1) Reagent inventory
Changed the resolution of reagent volume per pulse from 1ul/puse to 1nl/pulse to improve reagent inventory.
- 2) ISE prime during measurement
Changed to perform ISE prime every 10 minutes to stabilize ISE measurement.
- 3) Variation of cuvette to be used prime
Changed to use different cuvettes for prime to avoid wash solution accumulation to cuvettes #25 and #27.
- 4) Alarm at Waste chamber overflow
Corrected to display alarm message for "2753"

Sub CPU software

Unchanged.